

# مَدْرَسَةُ الْخَلِيجِ النَّمُوذَجِيَّةِ

## Gulf Model School



## POLICY IN CASE OF INJURY



### **1) If injured in class room/ Corridor:**

- a) Inform the class teacher immediately.
- b) With the permission of teacher and exit pass report to the school clinic. If it is a serious injury the affected child should be accompanied by an adult.
- c) An assessment is done by the school nurse/ doctor and First Aid is administered.
- d) School doctor or nurse to inform the heads of the institutions and the parents if needed.
- e) Detailed report to be prepared and to be signed by Principal/ AD of the school / doctor nurse

### **2) If injured in any Play Area:**

- a) Inform the teacher on duty immediately.
- b) With the help of teacher report to the school clinic. If it is serious injury the affected child should be accompanied by an adult.
- c) An assessment is done by the school nurse/ doctor and First Aid is administered.
- d) School Doctor or nurse to inform the heads of the institutions and the parents if needed.
- e) Detailed report to be prepared and to be signed by Principal/ Vice principal by the School Doctor / Nurse

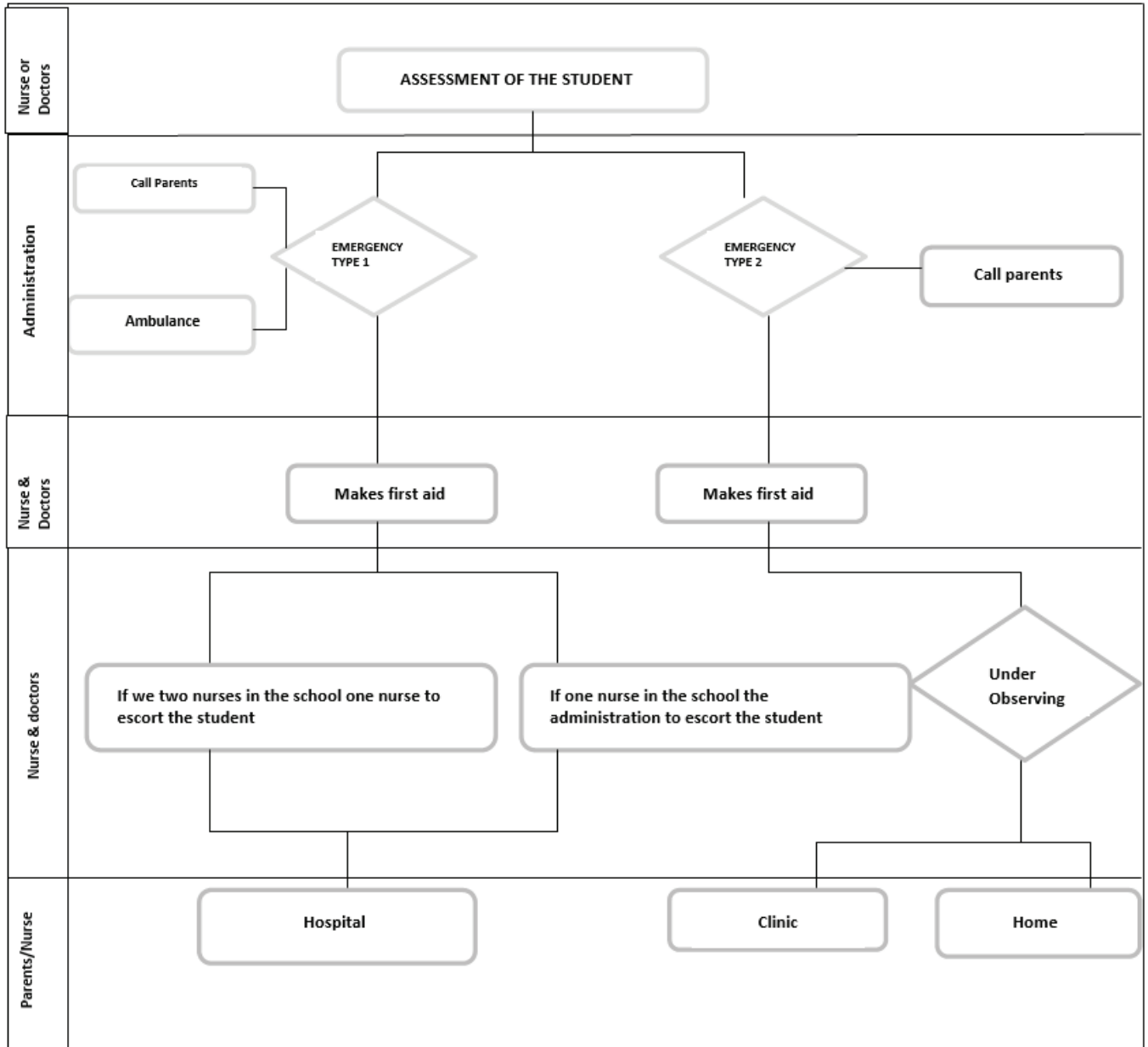
### **FLOW CHATS IN THE FOLLOWING PAGES:**

**Emergency Protocol Flow Chart**

**Risk Assessment Protocol - Physical Education**

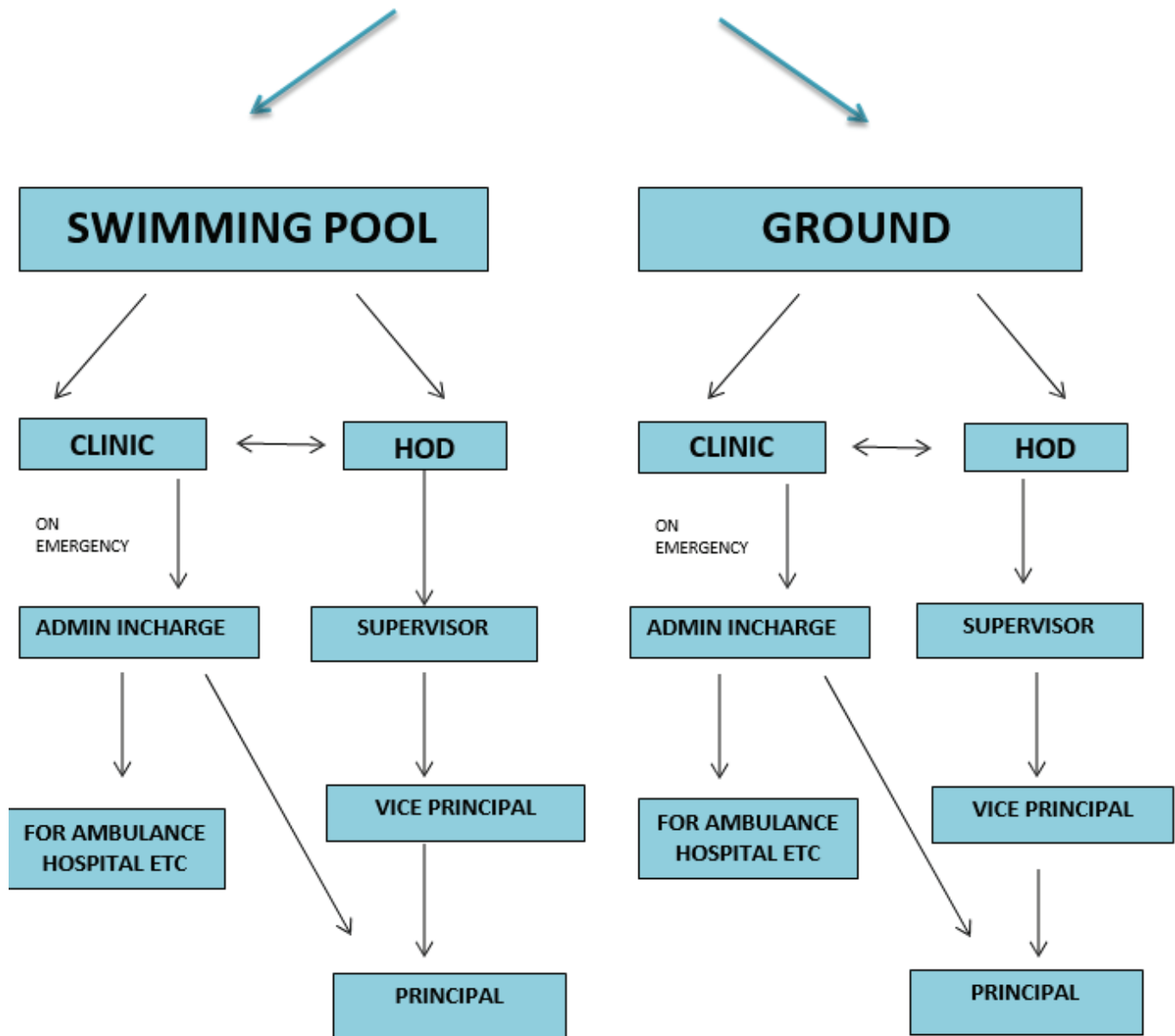
**Risk Assessment Protocol - Classrooms**

## Emergency Protocol Flow Chart



## RISK ASSESSMENT PROTOCOL

# PHYSICAL EDUCATION



## RISK ASSESSMENT PROTOCOL

# CLASS ROOMS

