

SEESAW GUIDE


DOWNLOAD SEESAW CLASS APP FROM PLAYSTORE OR APP STORE
THEN SELECT I 'M STUDENT

7:17 📶 81


← 👤 Student Sign In 👤

Email


Password

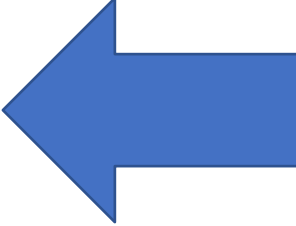
 

[Forgot Password?](#)

 Sign In with Google

[Seesaw for Schools Clever Sign In](#)

 Scan Code



7:17

81

Cancel

accounts.google.com

AA



Sign in with Google

Choose an account

to continue to [Seesaw](#)



Ravoof k

kmohdravoofk@gmail.com



SCHOOL IT

pepssch10@gmail.com



PEPS SCHOOL

pepssch21@gmail.com



ravoof kallarpe

ravoof@pepsschool.ae



Use another account



To continue, Google will share your name, email address, language preference, and profile picture with Seesaw. Before using this app, you can review Seesaw's [privacy policy](#) and [terms of service](#).



7:18

81

Cancel

accounts.google.com

AA



Sign in with Google

Sign in

to continue to **Seesaw**

Email or phone

a@n@pepsschool.ae

[Forgot email?](#)

[Create account](#)

Next



English (United States)



[Help](#)

[Privacy](#)

[Terms](#)



7:18

81

Cancel

accounts.google.com

AA



Sign in with Google

Hi admin



admin@pepsschool.ae

Enter your password

••••••••



Show password

[Forgot password?](#)

Next

English (United States)



[Help](#)

[Privacy](#)

[Terms](#)



7:18

81

Cancel

accounts.google.com

AA



Sign in with Google

Hi admin



admin@pepsschool.ae

Create a strong password

Create a new, strong password that you don't use for other websites

Create password

Confirm

At least 8 characters

Show password

Next



CHANGE
PASSWORD

English (United States)





7:19

80



Year 5E Acy23-24



To Do



In Progress



Done

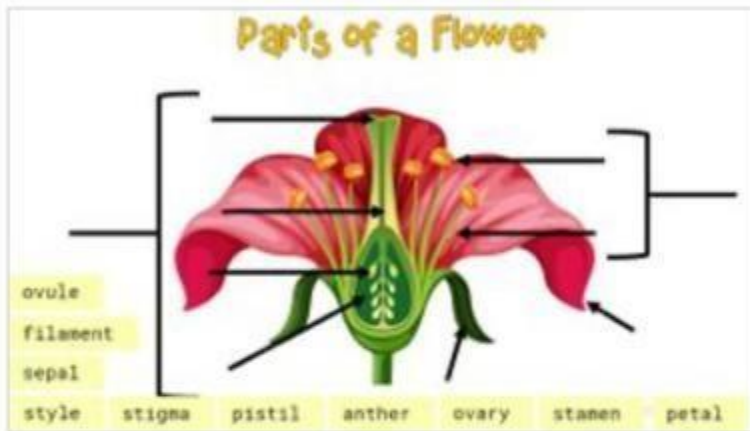


Calendar



Folders

Monday, September 11



Parts of a Flower

Label the parts of the flower.

1. Tap the **+** Add Response button
2. Tap the **T** tool. Match the name to the correct part of the flower.
3. Tap the **✓** to add to your portfolio.

▶ Play Instructions (0:19)

Waiting for Response

+ Add Response



Journal



Activities



Notifications